

# Newton Abbot Ready-mixed Concrete

## Site Biodiversity Action Plan



Prepared: October 2023

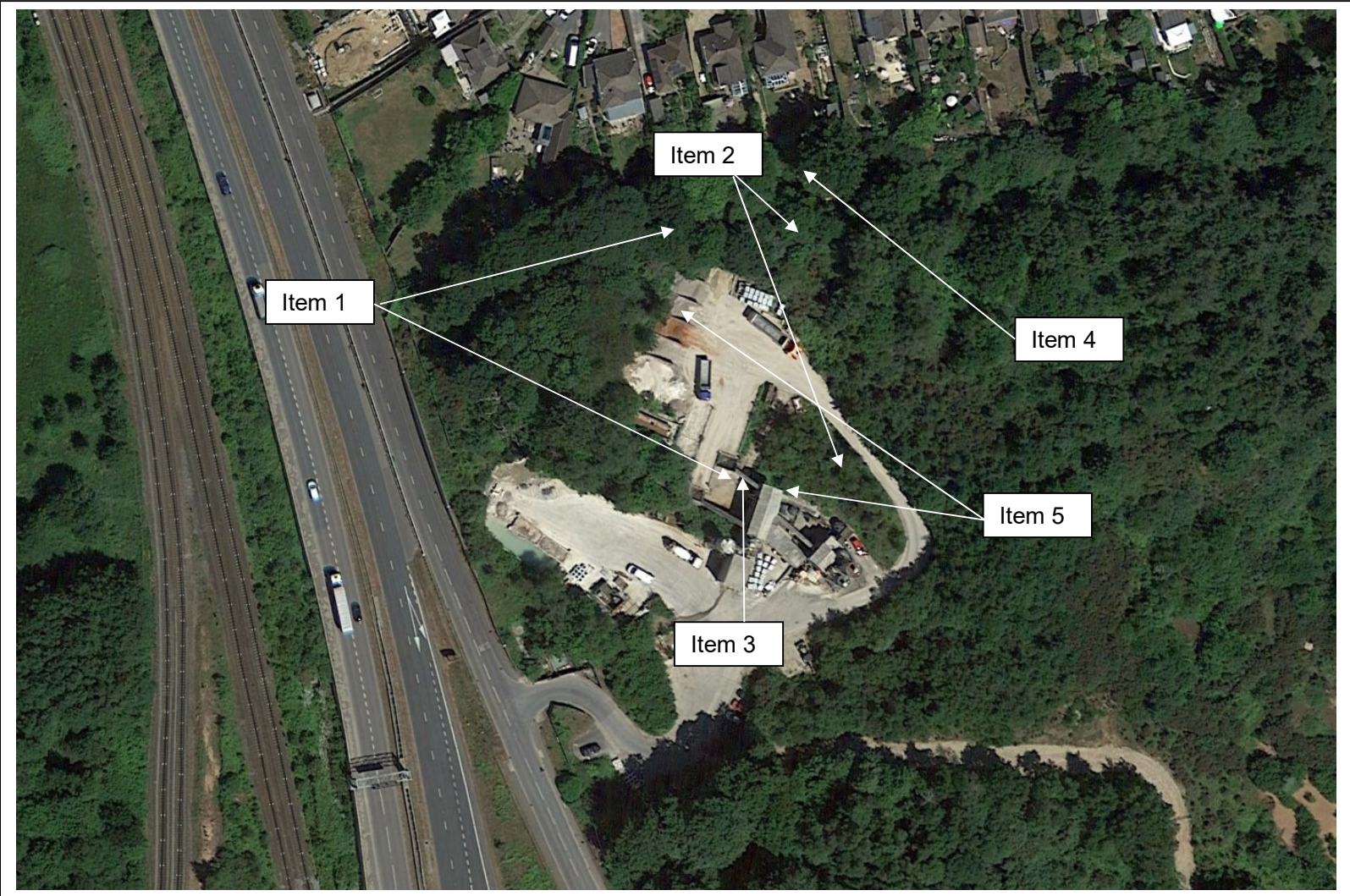
Updated:

### Site Information- Newton Abbot Ready-mixed Concrete

<b>Site Name and Location (incl. Grid Ref.)</b>	Newton Abbot Ready-mixed Concrete, Royal Allervale Quarry, Newton Abbot, Devon TQ12 4NW Grid Ref. SX 876 695 (Office)
<b>Heidelberg Materials Company</b>	Hanson Ready-mixed Concrete
<b>BAP(s) that will be targeted</b>	The Devon Biodiversity Action Plan SW Region BAP UK BAP
<b>BAP habitats and species to be encouraged</b>	Broadleaved woodland Ponds Bat spp Dormice Wetland invertebrates
<b>Background and site description</b>	The 3ha ready-mixed concrete site is situated on the southern edge of a residential area, to the south east of Newton Abbot. The site was previously associated with the fully worked out and restored Allervale Quarry. Approximately 2.5ha of the site comprises semi natural woodland, planted woodland and scrub habitats along with a lone water body. The site is bounded on the western side by the A380, to the east the previous quarry was restored to woodland, grassland and wetland habitat and to the south the site is bordered by semi natural woodland for some 500m where another quarry operation known as Zig Zag quarry is then located.
<b>National Designations (SSSI, SAC, SPAs, RAMSARs and NPs) within 500m</b>	Aller Sand Pit SSSI A geological SSSI 3-400m east of the concrete plant that is the Type Exposure for Aller Gravel and is the best section remaining of the Palaeogene gravels in the South West peninsula.
<b>Resource Requirements-comment on cost if appropriate</b>	Propose for BAP work to be included in annual site maintenance budget
<b>Contribution to biodiversity</b>	Preserving and bringing into management as required a vital woodland habitat connection within the local landscape.
<b>Partners and Local initiatives</b>	None known
<b>Other documents supporting the site BAP</b>	Allervale Quarry restoration designs eg Plant Site reclamation plan A36m/62 with proposals for geological exposure of Aller gravels interface with Upper Greensand.



Site Layout



## Action Plan

Item No.	Objective	Biodiversity Feature	Targets	Tasks	Assessing Indicator	Responsible Person	Timescale (Completion)
1	Ecological monitoring and recording	Woodland Ponds Bat sp Dormice	Improve and update site records to aid future BAP management	1. Appoint and brief ecological consultant to carry out surveys of target habitats and species e.g. bats, dormice, birds on site to guide land management	Consultant engaged and reports received.	Landscape Architect	Q4 2025
2	To improve habitat quality of woodland resource	Broadleaved woodland and associated flora and fauna	Improve the structure and diversity of middle-aged plantations and other woodland areas	1. In conjunction with surveys conducted under Item 1, review existing woodland resource for diseases e.g. ash die back and management requirements of plantations, woodland and trees adjacent to neighbours' gardens.	Site review undertaken	Landscape Architect	Q4 2025
				2. Draw up management proposals and apply for Felling Licence if required.	Management proposals drawn up.	Landscape Architect	Q4 2027
				3. Review options for future planting if available.	Site review undertaken	Landscape Architect/ Site Manager	Q4 2025
3	To improve habitat	Ponds and associated	Improve habitat quality where possible of	1. In conjunction with surveys conducted under	Site review undertaken	Landscape Architect	Q4 2025

	quality of on- site ponds	invertebrate communities.	wetland features e.g. emergent vegetation, silting.	Item 1, review pond structure and quality.  2. Draw up management regime as required for maintaining wetland habitat for maximum biodiversity.	Proposals drawn up and underway	Landscape Architect	Q4 2027
4	Control non-native, invasive species	Broadleaved woodland and grassland	To eradicate non-native, invasive species.	1. Carry out a site survey to establish presence or absence of non-native invasive species.  2. Put in place measures to eradicate species if required e.g. annual herbicide applications to Japanese knotweed.	Survey carried out.  Control measures in place	Landscape Architect / Ecologist  Site Manager	Q4 2025  Ongoing for life of site unless eradicated
5	Provision of wildlife refugia	Bat spp. Bird spp. Invertebrate spp.	Improve and increase the refuge opportunities for wildlife as identified by ecological surveys conducted under Item	1. Erect wildlife boxes e.g. bird, bat and invertebrate as recommended by ecological surveys.  2. Increase availability of standing and fallen dead wood habitat within woodland / plantations	No. and type of boxes erected.  Presence of standing dead wood and habitat piles	Landscape Architect/ Site Manager  Landscape Architect	Q4 2026  Q2 2028